

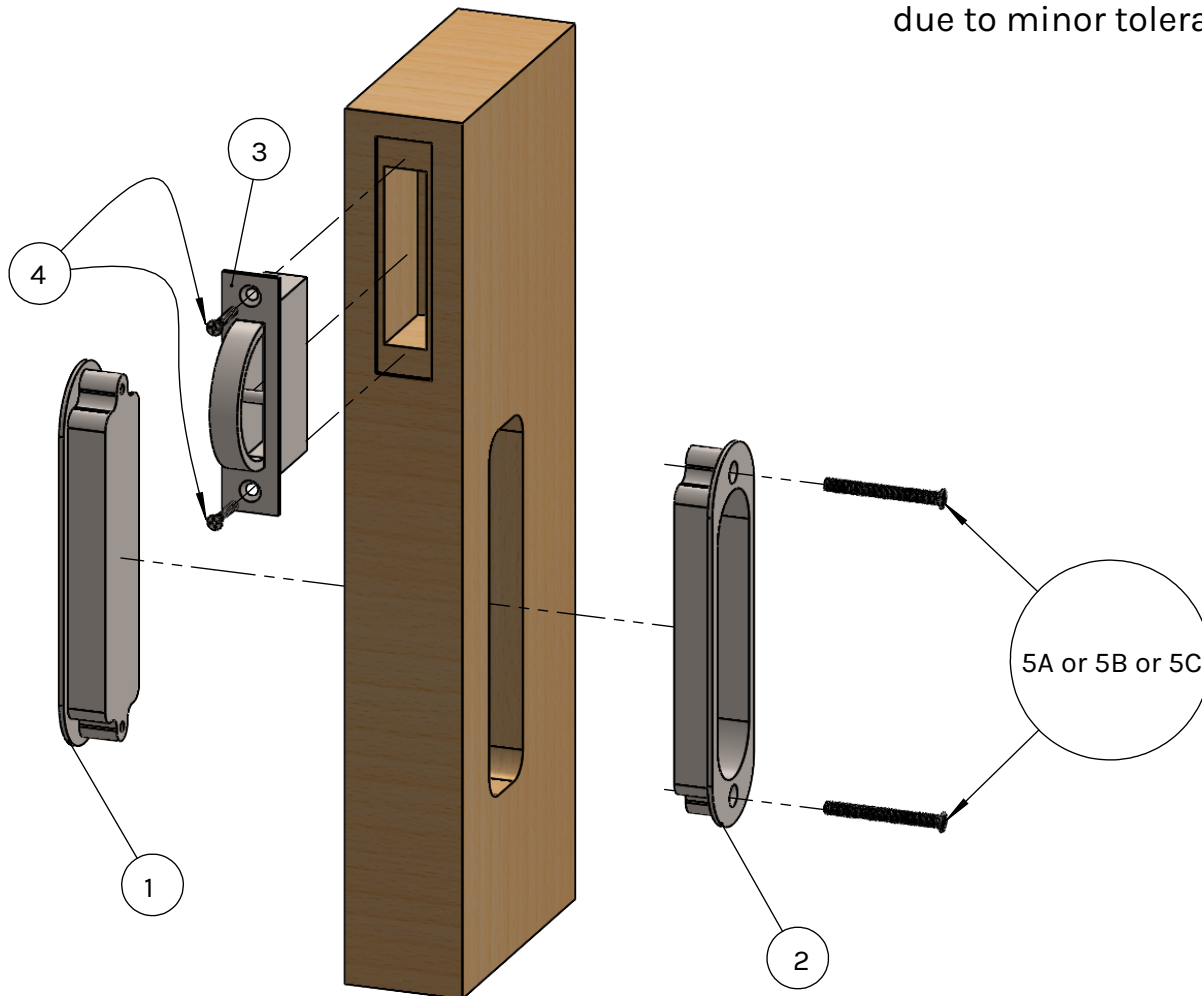
# PL-160 Round Dummy Installation Diagram

(Minimum Door Thickness 1-3/8")

SKU: PL160R-OO-FD

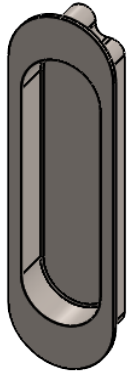
PL-160 Trim Requires Precise Installation.  
Otherwise, It May Not Function Properly.

1. Trims are not required to be recessed to accommodate pocket width.
2. Measure the trim dimensions before cutting the door due to minor tolerances in overall dimensions.



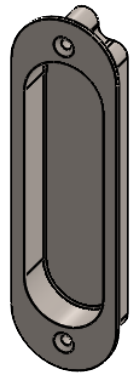
## Component List

1



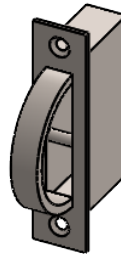
**Dummy  
Outside Trim**  
PLD160RT-O  
(Needs 1)

2



**Dummy  
Inside Trim**  
PLD160RT-I  
(Needs 1)

3



**Edge Pull**  
EP-600  
(Needs 1)

4



**Wood Screw**  
#8 X 3/4"  
(Needs 2)

5



**Machine Screw**  
5A: PL-OVSCR36  
5B: PL-OVSCR40  
5C: PL-OVSCR42