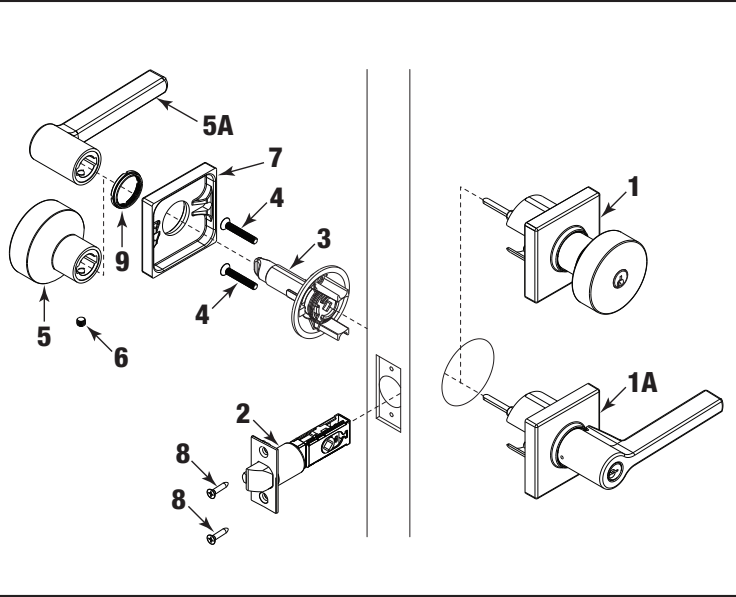


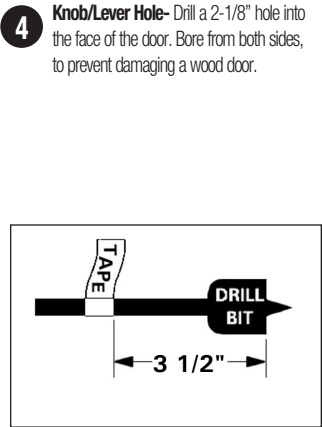
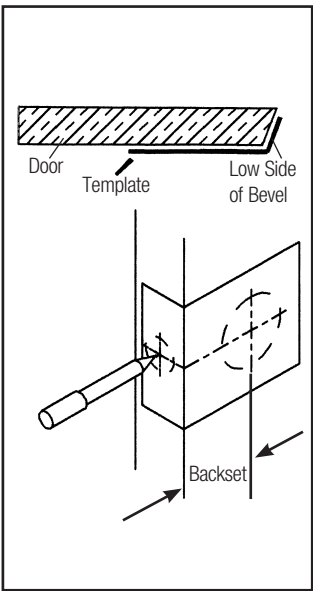
Keyed Entry Lockset Installation

Exploded View Keyed Entry Locksets

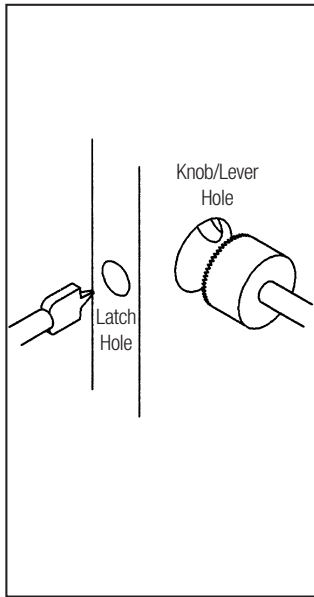


Door Preparation (If Door Already Has Holes Proceed To Step 6)

- Before drilling holes, measure up 38" from floor and mark height on edge of door in pencil. This will determine the height placement of the lock on the door.
- Measure the thickness of the door. Mark the center point on the edge of door that intersects with the 38" height line. This will determine where the latch hole must be drilled.
- Position template on face of the door. If door is beveled, place template on low side of bevel. Mark the location of the desired backset in pencil at the 38" height line. Backset is the measurement of the distance from the edge of the door to the center of the knob or lever hole. 2-3/8" or 2-3/4".

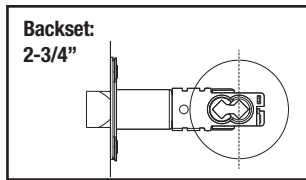
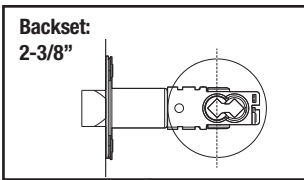


- Knob/Lever Hole-** Drill a 2-1/8" hole into the face of the door. Bore from both sides, to prevent damaging a wood door.
- Latch Hole-** Drill a 1" hole into the edge of the door at the point where the height line and center of the door thickness meet. You have already marked this in step #2. Drill the hole 3-1/2" deep.



Keyed Entry Latch Installation

- Insert latch into the edge of the door. Trace the outline of the faceplate onto the door edge. Mark screw hole centers in pencil and drill with a 1/8" drill.
- Chisel out the area marked for the faceplate in Step 6 to a depth of 1/8" or until faceplate is flush with door edge.
- Slide the latch into the door with the slant of the latch bolt facing the door jamb (deadlocking trigger toward the inside of house) and secure with the two #8 x 3/4" wood screws.

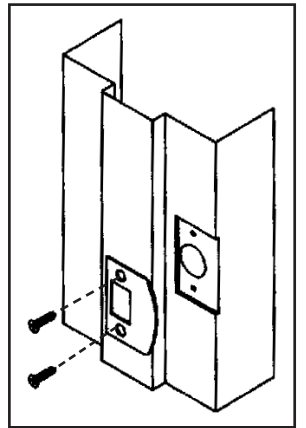
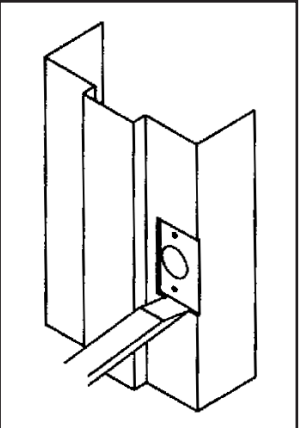
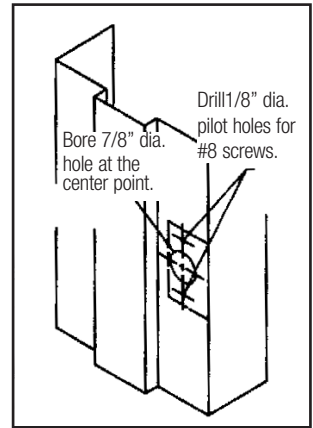
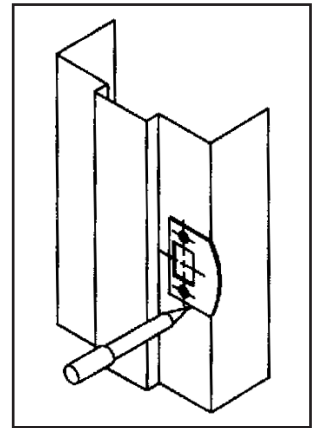
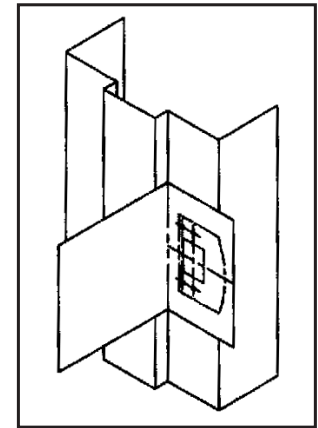
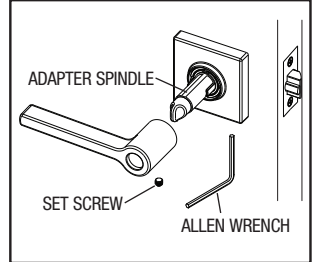
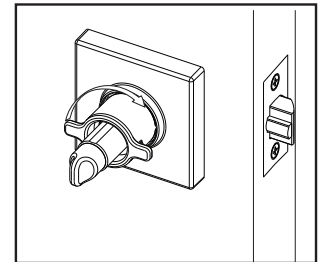
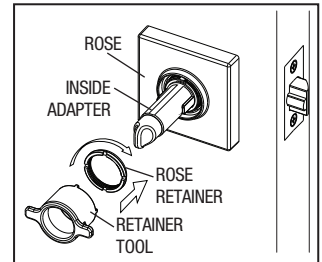
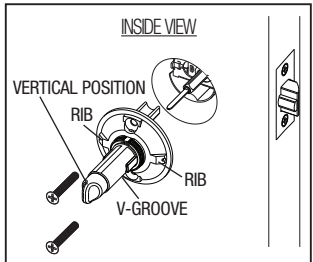
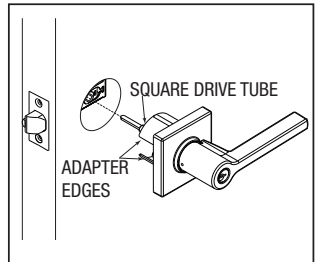


Parts Enclosed:

- | | |
|---|--|
| 1. One Outside Knob - (provided with knob products only) | 7. One Rose |
| 1A. One Outside lever - (provided with lever products only) | 8. Four - #8 Wood Screws (2 screws are used with the strike and are not shown in picture). |
| 2. One Deadlocking Latch | 9. Rose Retainer |
| 3. One Inside Adapter Assembly - includes Spindle-Hub | 10. One Strike - Not Shown |
| 4. Two #10-24 x 1-1/4" Machine Screws | 11. One Allen Wrench - Not Shown |
| 5. One Inside Knob - (provided with knob products only) | 12. Rose Retainer Tool - Not Shown |
| 5A. One Inside lever - (provided with lever products only) | |
| 6. One Pointed Set Screw | |

Keyed Entry Lockset Installation

- Install the outside knob or lever assembly by pressing the square drive tube through the square hole in the latch while sliding the edges of the adapter into the latch case slots. **NOTE: When installing locksets with outside knob make sure the key opening is positioned as shown in Fig. A. This does not apply to outside levers.**
- Next, install the inside adapter assembly with the "V" groove on the bottom and the turn knob vertical. Fasten it to the Outside Knob or Lever Assembly with two 10-24 x 1-1/4" machine screws. Make sure the "rib" features on the adapter are at horizontal positions 3 O'clock and 9 O'clock (Fig. B). The rose will align to the ribs.
- Place the rose onto the adapter. Align the cutouts on the backside of the rose with the ribs on the adapter (Fig. C). Hold the rose flat against the door. Place the retainer through the adapter and thread the retainer onto the adapter.
- Use the retainer tool to tighten the retainer. Make sure the rose is level before tightening.



Tools Needed: Door Preparation

- Electric Drill
- 1/2" Chisel
- 2-1/8" Hole Saw
- 1" Spade Bit
- Phillips Head Screwdriver

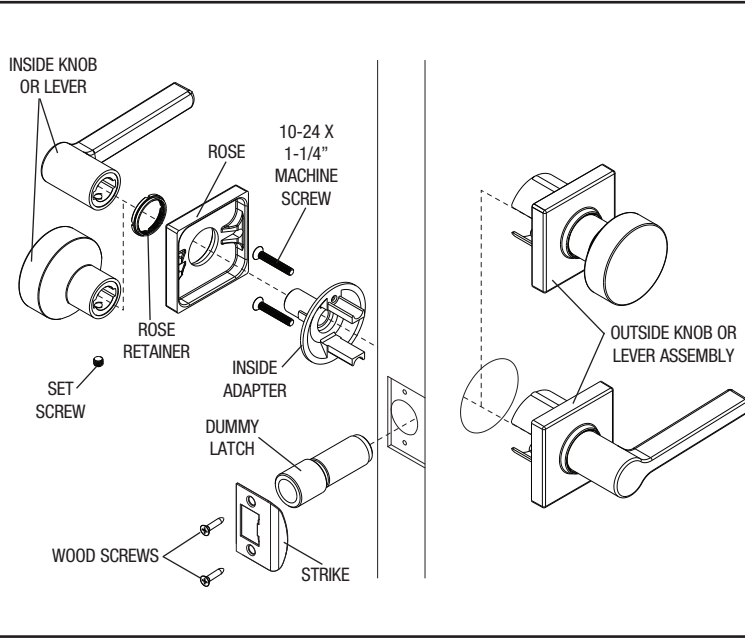
Tools Needed: Doors Prepared with 2 - 1/8" Cutout

- Phillips Head Screwdriver

WARNING: This Manufacturer advises that no lock can provide complete security by itself. This lock may be defeated by forcible or technical means, or evaded by entry elsewhere on the property. No lock can substitute for caution, awareness of your environment, and common sense. Builder's hardware is available in multiple performance grades to suit the application. In order to enhance security and reduce risk, you should consult a qualified locksmith or other security professional.

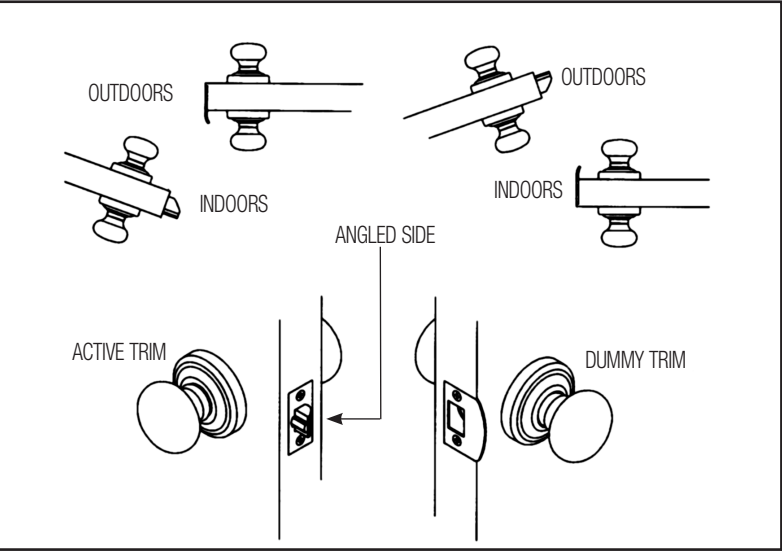
Dummy Function Keyed Entry Lockset Installation

Exploded View Dummy Function Keyed Entry Locksets



Dummy Strike Preparation

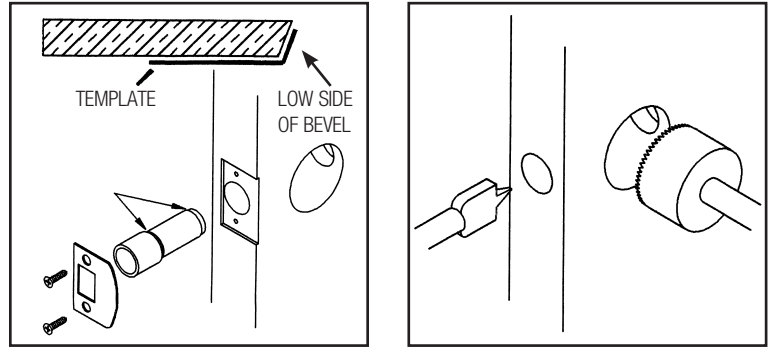
The strike needs to be installed in relationship to the direction that doors open. Whether the doors open in or out, the angled side of the latchbolt must **always** face towards the stationary door when the active door is in the open position. The strike is then positioned with the lip facing the angled side of the latchbolt as illustrated.



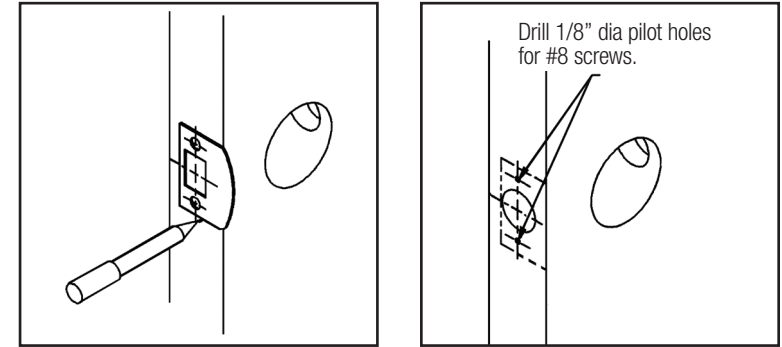
Door Preparation for Dummy Trim

- 1** **Caution: Before proceeding with the Door Preparation, refer to the Dummy Strike Preparation Illustration to ensure that the curved section of the strike is positioned properly.** Fold the template on the line and place on the door at the exact height of the previously installed Keyed Entry Lockset. If the door is beveled, place the folded edge on the low side of the bevel as shown in the illustration. Mark the door for the face and edge bores.

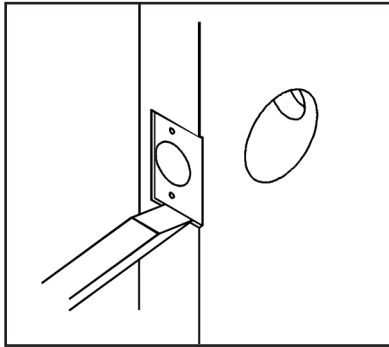
Note: Dummy Trim must use same backset as the active trim.
- 2** **Caution: Re-check bore hole locations before drilling.** Drill the 2-1/8" diameter face bore through the door and the 1" diameter edge bore 3-1/2" deep for a 2-3/8" backset or 3-7/8" deep for a 2-3/4" backset. The dummy latch accommodates both size backsets.



- 3** Align the strike and trace an outline onto the door frame using the mounting screw marks for location.
- 4** At the screw marks, drill two 1/8" diameter pilot holes for #8 x 3/4" wood screws.

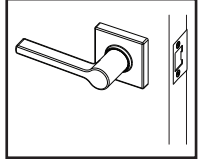
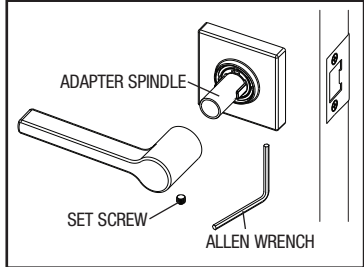
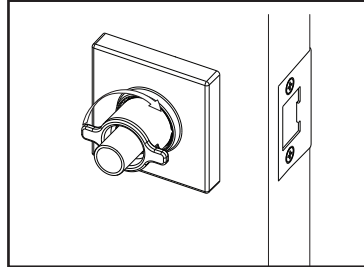
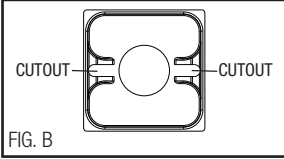
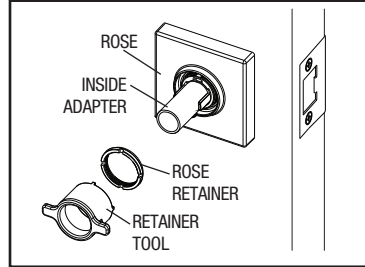
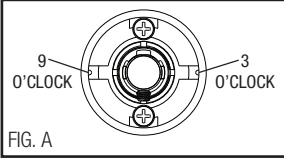
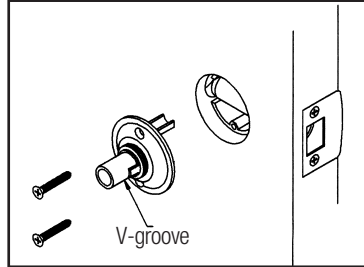
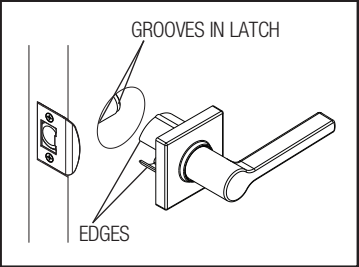
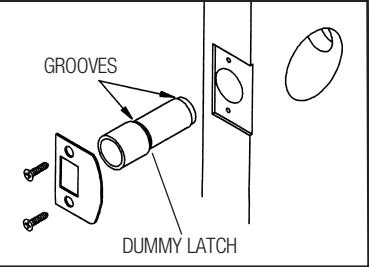


- 5** Chisel the area marked for the strike in Step 3 to a depth of 1/16" or until the strike is flush with the door frame. Do **not** install the strike at this time.



Dummy Function Keyed Entry Lockset Installation

- 1** Press the dummy latch into the 1" diameter hole. Install the strike with two #8 x 3/4" wood screws.
- 2** Install the outside knob or lever assembly so the edges of the adapter engage the grooves in the dummy latch.
- 3** Install the inside adapter with the spindle V-groove on the bottom and fasten to the outside knob or lever assembly with two 10-24 x 1-1/4" machine screws. Make sure the "rib" features on the adapter are at horizontal positions 3 O'clock and 9 O'clock (Fig. A). The rose will align to the ribs.
- 4** Place the rose onto the adapter. Align the cutouts on the backside of the rose with the ribs on the adapter (Fig. B). Hold the rose flat against the door. Place the retainer through the adapter and thread the retainer onto the adapter.
- 5** Use the retainer tool to tighten the retainer. Make sure the rose is level before tightening.
- 6** Slide the inside knob (or lever) onto the adapter spindle with the set screw hole facing down. Insert the set screw into the hole on the knob (or lever) and thread it into the spindle shaft to attach the knob (or lever).



Your Baldwin lockset is now ready for a lifetime of use.

Warranty Information

Limited Lifetime Mechanical Warranty
Baldwin warrants that each Baldwin product shall be free from mechanical defects at the time of delivery and for the lifetime of the product or as long as you own your home.

Limited Lifetime Finish™ Warranty
The Baldwin Lifetime Finish™ uses advanced finishing technology (physical vapor deposition) to create a finish highly resistant to the effects of weather and normal wear and tear. The Limited Lifetime Finish Warranty on Lifetime Finish™ products covers the original purchaser for as long as you own your home.

Limited Finish Warranty
The finish on Baldwin products (excluding Lifetime Finish and living finish products) is protected by a durable topcoat designed to maintain the beauty and quality of the Baldwin product. The Baldwin Limited Finish Warranty covers the original purchaser for five years from date of purchase for interior use and one year for exterior use.

Living Finishes
Due to the nature of Baldwin living finish products, they will wear over time and may already have begun the process before reaching your home. No finish warranty is offered on living finish products, which are designed to age and improve over time. Living finishes include raw brass, oil rubbed bronze, stainless steel, and other non-lacquered or non-PVD finishes.

Refer to www.baldwinhardware.com for a complete warranty statement.

Congratulations!

With your purchase of this solid brass lockset, you're among a group of discerning individuals who know the intrinsic value of selecting the finest – Baldwin.

Our step-by-step installation instructions will help guide you through your project quickly and easily.

Before you begin your installation, read and understand the installation instructions and marking templates.

We thank you for your purchase and wish you the fullest enjoyment of your Baldwin lockset.

Remember Baldwin



With the completion of your project, remember that Baldwin quality hardware products are available for all your decorating and remodeling needs. Matching entrance sets for exterior doors, beautiful bath accessories, and a complete selection of cabinet and door-enhancing hardware are all available from your Baldwin retailer.

BALDWIN®

Keyed Entry Locksets

Installation Instructions