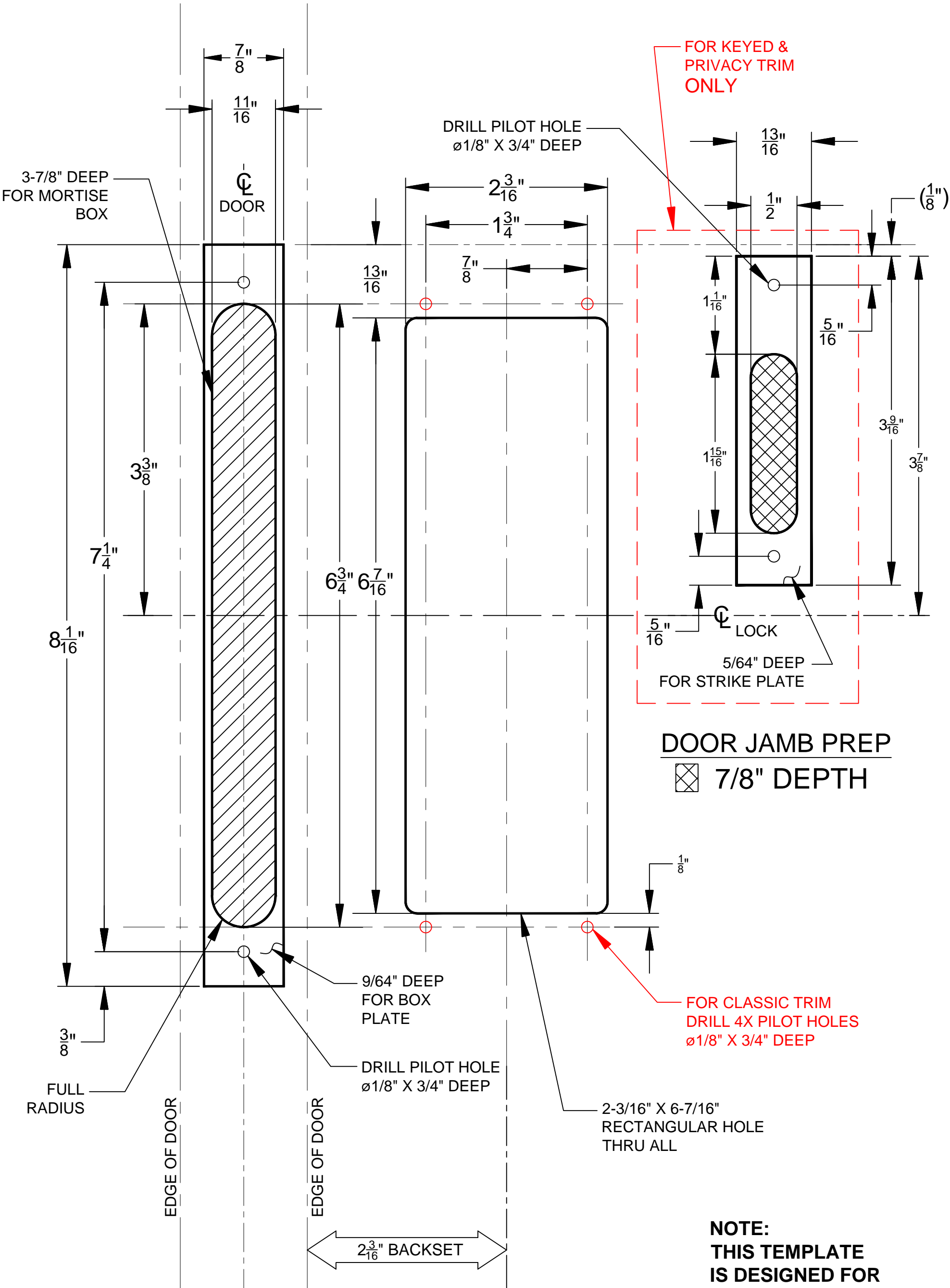
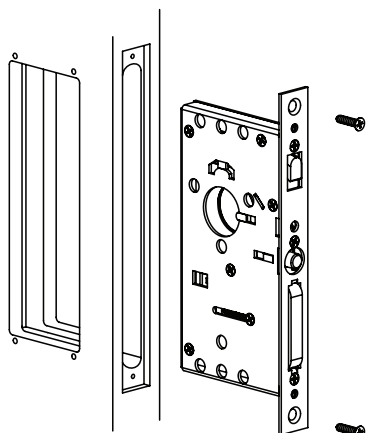


# POCKET DOOR MORTISE HOLE PREPARATION



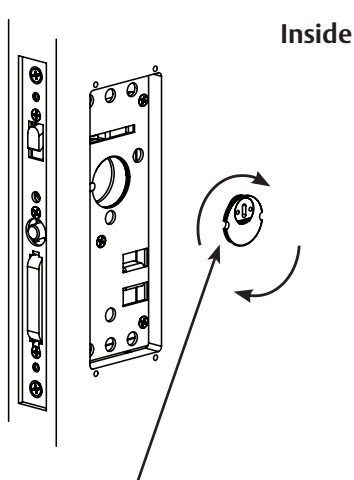
\* NOTE: 8-1/2" X 11" COPY OF THIS  
TEMPLATE NOT TO SCALE.

## 1 Install Lock Body



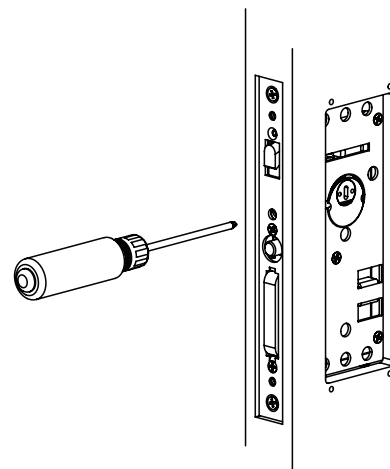
See template for door prep specifications

## 2 Install Drive Bar Cylinder



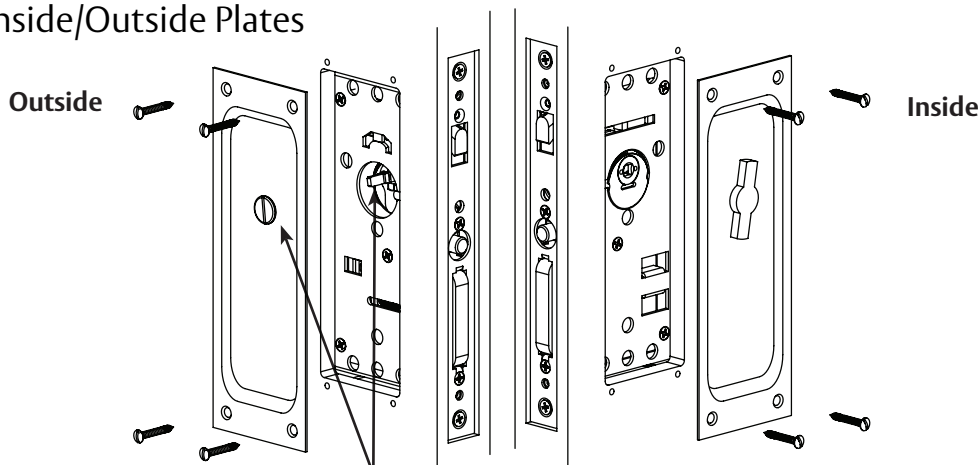
Note: Notch on cylinder must be in the 9 o'clock position when fully screwed into lock body.

## 3 Tighten Drive Bar Cylinder



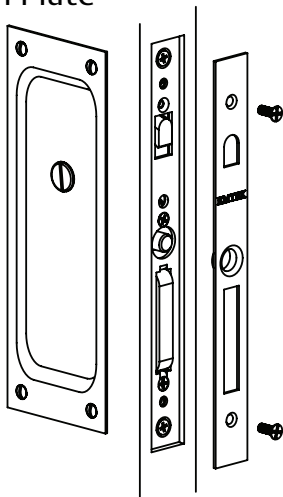
Tighten locking screw to engage notch on cylinder

## 4 Mount Inside/Outside Plates

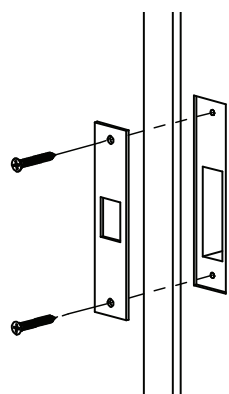


Align Passage/Privacy Button with Thumb-Turn spindle and secure trim plates to door.

## 5 Install Trim Plate



## 6 Install Door Jamb



Drill two 7/64" pilot holes

See template for door jamb prep specifications