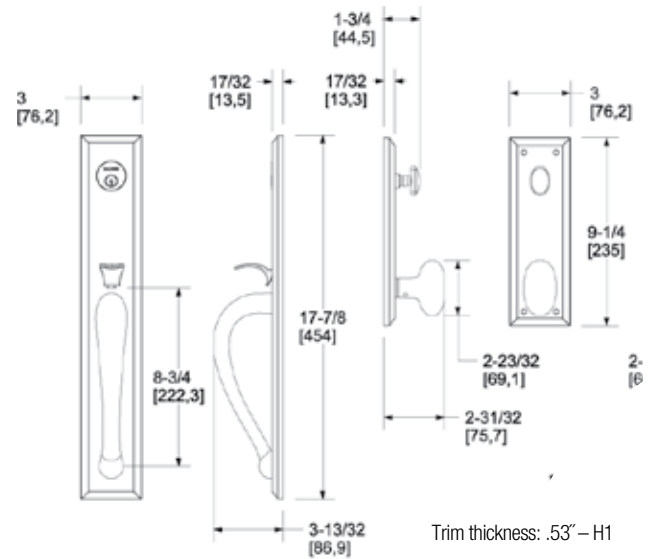


BALDWIN®

ESTATE™

CODY FULL ESCUTCHEON TRIM

SHOWN WITH OVAL KNOB IN 452 FINISH

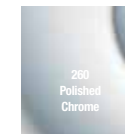
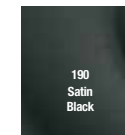
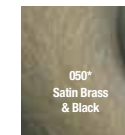
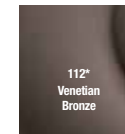
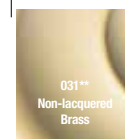


SPECIFICATIONS



- Solid forged brass
- Accessibility Code (ADA) A117.1 for installed with any lever
- Standard 6-pin available on all except 1" cylinders
- ANSI/BHMA A 156.13 Operational & Security Grade I when used in conjunction with Baldwin Commercial Mortise Locks

TIER 1 FINISHES



TIER 2 FINISHES

