

# SK500

## Digital Lever Lock

### User Manual / Installation Guide



#### SK500 Series

#### SPECIFICATIONS

Dimensions (Panels with levers):  
5 3/16" (H) x 5 1/2" (W) x 2 3/4" (D)

Total Weight: 3.31lbs

Door Thickness: 1 3/16" — 2"

Adjustable Stainless Steel Latch

Power Supply:  
4AA Alkaline Batteries (included)

Digital Keypad

Temperature: -40°F — 185°F

Thank you for choosing the Delaney SK500 Digital Lever Lock.  
Please keep this manual for future reference.

#### TEMPLATE

Mark and Bore center of  
door thickness for 1" (25mm) hole

50 mm  
45 mm 40 mm  
35 mm

Please tear off along the dotted line

Fold along dotted line and fit on door edge

For backset 2 3/8 " 60 mm - Mark center

For backset 2 3/4 " 70 mm - Mark center

Drill 2 1/8" (54 mm) dia. hole

## SK500 USER INSTRUCTIONS

The SK500 can be programmed to remain locked at all times, requiring a Master Code each time access to the door is required. It can also be programmed to remain unlocked at all times, allowing open access until the the lock code is used. Please follow the instructions below.

### TO UNLOCK WITH ONE-TIME ACCESS

- Enter Master Code or Sub-Code and press #.  
**Correct:** One long beep. Motor of lock is engaged & latch is operable.  
**Incorrect:** Three beeps. After 5 successional incorrect attempts, the Keypad becomes inactive for 1 minute.

*\*Note: Auto-Lock Function engages after 2 seconds of latch retracting or 5 seconds of lock being idle.*

### TO UNLOCK WITH UNLIMITED ACCESS

- Enter Master Code or Sub-Code and press #  
**Correct:** One long beep. Motor of lock is engaged & latch is operable.  
**Incorrect:** Three beeps. After 5 successional incorrect attempts, the Keypad becomes inactive for 1 minute.
- Press # to lock.

### TO UNLOCK WITH KEY

- Remove Key Hole Cover.
- Insert key and turn 180° clockwise. As long as the key is in this position, the lock will remain unlocked.
- Return key to original position and remove from lock.
- Replace Key Hole Cover.

*\*Note: Using the key will not reset the Keypad or the Auto-Lock function.*

### TO LOCK

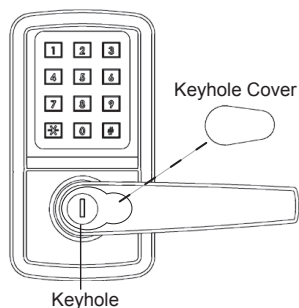
- Press #.

### TO PROGRAM MASTER CODE AND SUB-CODES

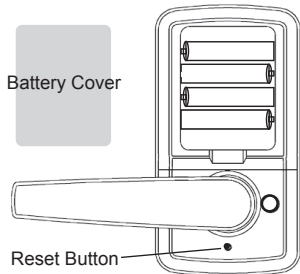
- Press Reset Button twice. (One long beep will follow.)
- Enter Master Code (111111) and #. (One long beep will follow.)
- Enter Sub-Code (see chart on right).
- Wait 2 seconds. Enter new code (4-6 digits) & press #. (One beep indicates accepted code. Three beeps indicate Error.)
- Press # to exit Program Mode.

*\*Note: Two beeps indicate idleness longer than 5 seconds and lock has exited Program Mode.*

### EXTERIOR VIEW



### INTERIOR VIEW



### PROGRAMMABLE SUBCODES

Master Code = \*00

(Pre-programmed Master Code = 111111)

Sub-Code 1 = \*01

Sub-Code 2 = \*02

Sub-Code 3 = \*03

Sub-Code 4 = \*04

Sub-Code 5 = \*05

Sub-Code 6 = \*06

Sub-Code 7 = \*07

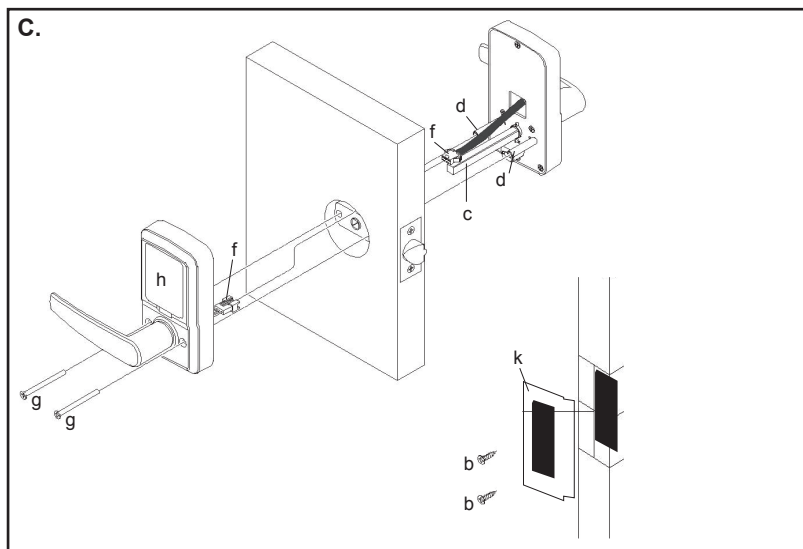
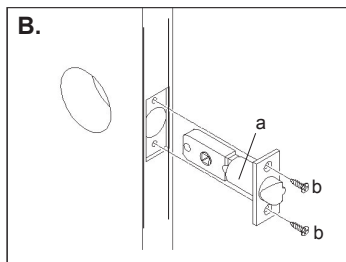
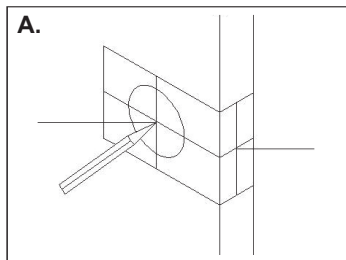
Sub-Code 8 = \*08

Sub-Code 9 = \*09

Temp Code = \*10

(Provides one-time Temporary Access.  
Code is erased after one-time use.)

## SK500 INSTALLATION

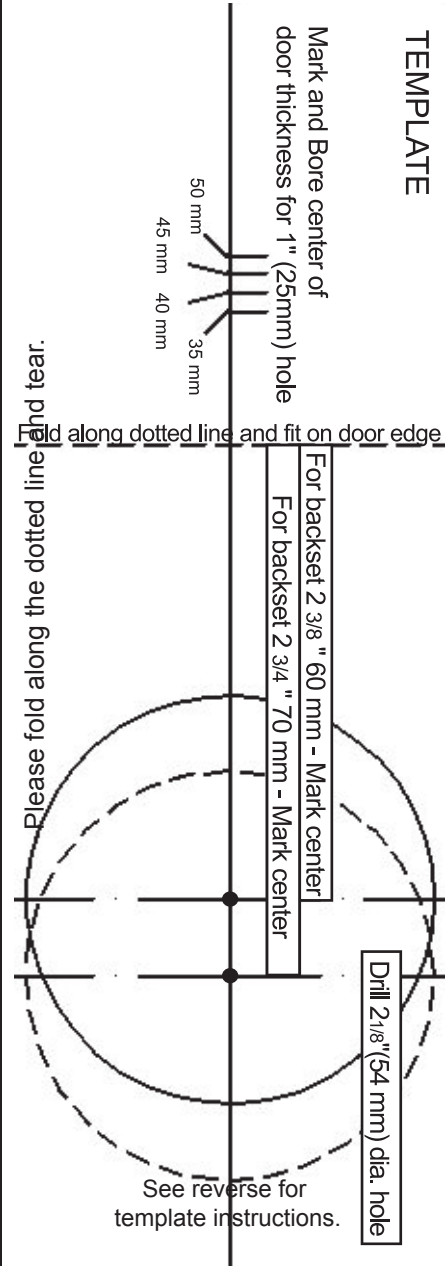


A. If door is not bored, use the attached template on the back of this manual. Follow instructions on the template. If door is bored, skip Step A and proceed to Step B.

B. Insert latch (a) into the door. Use a phillips screwdriver to tighten the screws (b), being careful not to overtighten.

C. Insert the square spindle (c) through the door and latch (a). Connect the wires (f x 2). Connect the two plates and tighten screws (g) into pipes (d). Remove battery cover (h) and install 4 AA batteries. Place strike plate (k) on door frame and tighten screws (b) with screwdriver.

## TEMPLATE





## SK500 USER INSTRUCTIONS

The SK500 can be programmed to remain locked at all times or it can be programmed to remain unlocked (passage mode) as needed. The interior lever is always open allowing free exit.

### UNLOCKING

- ① This lock allows one (1) Master code, nine (9) Sub codes and one (1) Temporary code. These are user programmed codes (see ③ through ⑤)
- ② Each lock comes with an access emergency key. Simply remove keyhole cover and unlock door.

### PROGRAMMING

#### ③ USER MASTER CODE SET UP

- 1) Press reset button twice to enter set up mode.
- 2) Input factory default master code (111111) and press # key
- 3) After single beep, enter ★00
- 4) Enter new User Master code (4-6 Digits) and press # key to confirm
- 5) Press # key again to exit

Note: User Master Code is now used to set Sub Codes and Temporary Code. If all codes are deleted (see ⑥), refer back to ③ to reset all user codes.

#### ④ SUB CODE SET UP

- 1) Press reset button twice to enter set mode.
- 2) Enter User Master Code and then press # key
- 3) After single beep enter ★01 and new Sub Code (4-6 digits) Then press # key to confirm and # key again to exit.  
For example: ★01 1234 #. Now your new User Code 1234 for the 01 Sub Code position
- 5) Repeat for Sub Code positions 02 through 09  
Beep Sounds

#### ⑤ TEMPORARY USER CODE SET UP

- 1) Press reset button twice to enter set up mode.
- 2) Enter User Master Code and then press # key
- 3) After single beep, enter ★10 and new Temporary code (4-6 digits) Then press # key to confirm and # key again to exit.

Note: This will be a one time use code only. After code is entered and lever is engaged the lock will relock and delete this code.

#### ⑥ DEFAULT SET UP

- 1) Press and hold the reset for up to 3 seconds until you hear a long beep. This will indicate that User Master Code and User Sub Codes have been deleted.
- 2) Return to ③, User Master Code set up to reprogram codes using factory default master code (111111)

#### ⑦ CARE AND MAINTENANCE

- 1) To preserve appearance of door lock, wipe down with a clean cloth. Do not use alcohol or solvent for cleaning.
- 2) Use Alkaline batteries only.

★ = Star Key  
# = Pound Key

Operation Success	1 Beep
Enter/Exit Set Up Mode	2 Beeps
Operation Failure	3 Beeps
Low Battery	5 Beeps

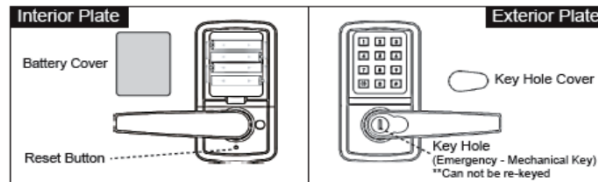
← Replace all Batteries

#### PROGRAMMABLE USER CODES

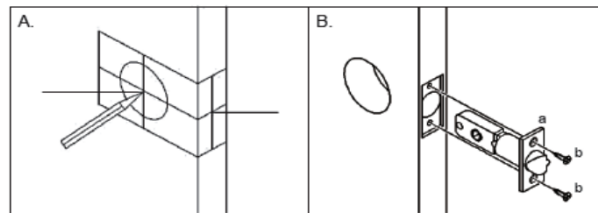
#### My Codes

Master Code	*00	
Sub Code 1	*01	
Sub Code 2	*02	
Sub Code 3	*03	
Sub Code 4	*04	
Sub Code 5	*05	
Sub Code 6	*06	
Sub Code 7	*07	
Sub Code 8	*08	
Sub Code 9	*09	
Temp Code 10	*10	

Please record your codes on this chart for your records.

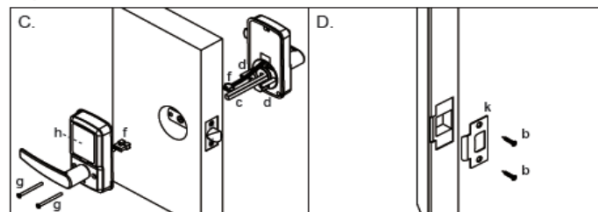


### Installation



If the door is not bored, use the attached template and follow instructions on it. If the door is bored, skip Step A and proceed to Step B.

Insert latch (a) into the door. Use a Phillips screwdriver to tighten the screws (b) x 2, being careful not to overtighten.



Insert the square spindle (c) through the door and latch (a). Connect the wires (f) x 2. Connect the two plates and tighten screws (g) x 2 into pipes (d) x 2. Remove battery cover (h) and install 4 AA batteries.

Place strike plate (k) on door frame and tighten screws (b) x 2 with screwdriver.