

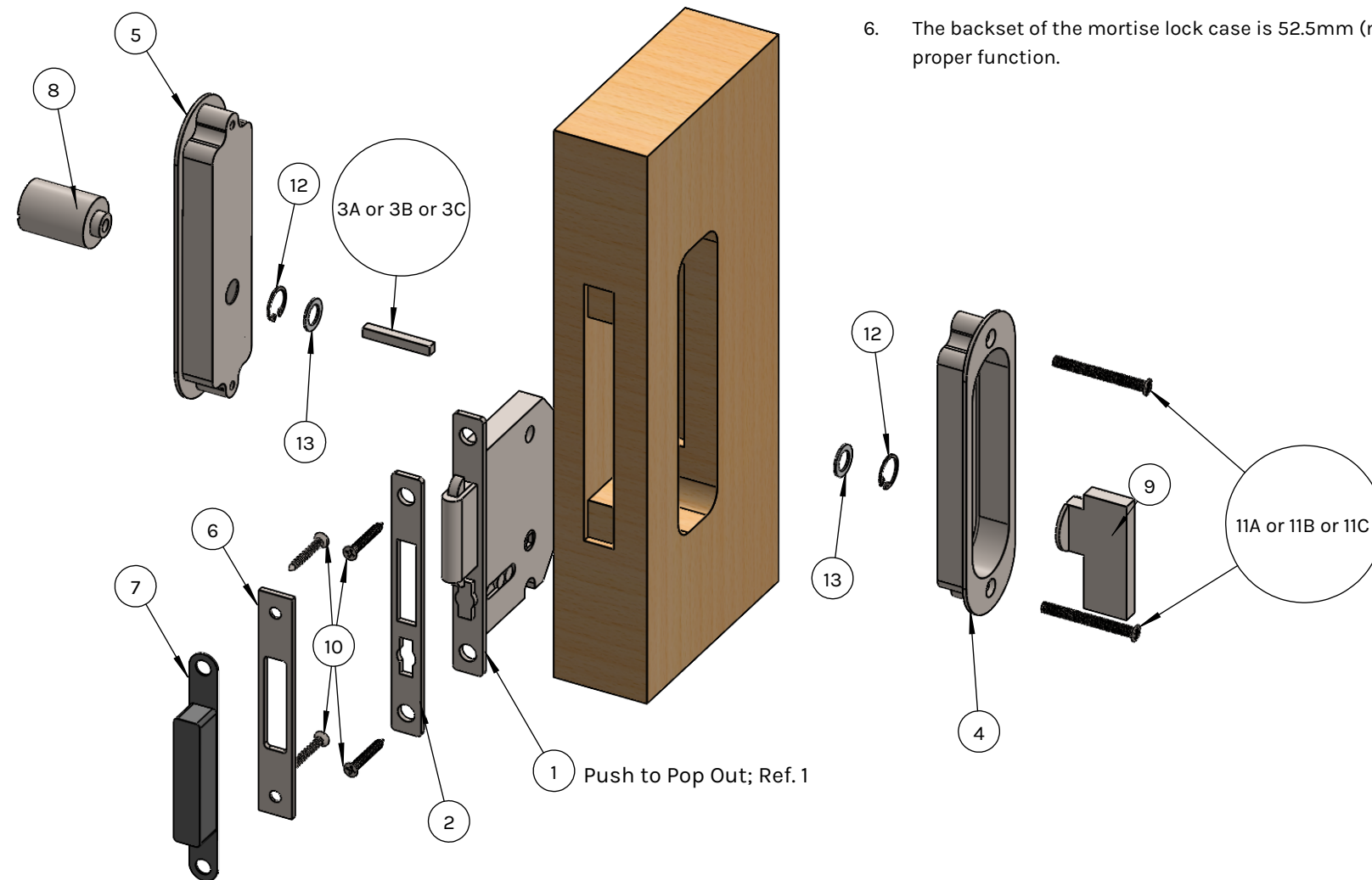
PL-160 Round ADA Privacy Installation Diagram

(Minimum Door Thickness 1-3/8")

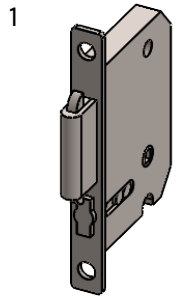
SKU: PL160R-AD-PR

PL-160 Trim Requires Precise Installation.
Otherwise, It May Not Function Properly.

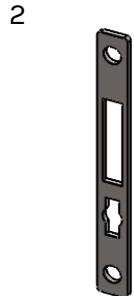
1. Knob and emergency release are supplied pre-installed.
2. The ADER extended emergency release can act as a pull, so an additional handle isn't required.
3. ADA locks are designed to prevent the pocket door from completely entering the pocket.
4. Trims aren't required to be recessed to accommodate pocket width; but a door thickness of 1-3/4" is required if opting for a recessed trim. Trims cannot be recessed on a 1-3/8" thick door.
5. Measure the trim dimensions before cutting the door due to minor tolerances in overall dimensions.
6. The backset of the mortise lock case is 52.5mm (metric). A 2" backset will not allow proper function.



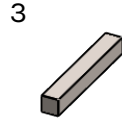
Component List



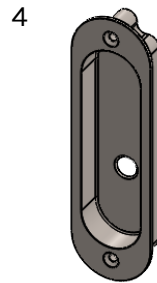
1
Mortise Lock
PLM-50PR-UNF
(Needs 1)



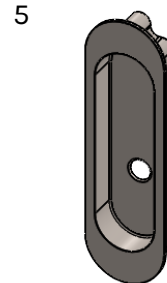
2
Face Plate
PLM-50PR-FP
(Needs 1)



3
Spindle
3A: PL-SPDL31
3B: PL-SPDL36
3C: PL-SPDL41



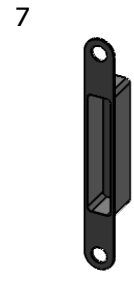
4
Inside Trim
PLA-160RT-I
(Needs 1)



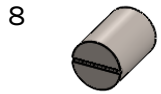
5
Outside Trim
PLA-160RT-O
(Needs 1)



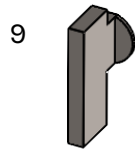
6
Strike Plate
PLM-50PR-ST
(Needs 1)



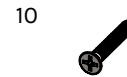
7
Dust Box
PL-DBOX160
(Needs 1)



8
ADA Emergency Release
PL-ADER
(Needs 1)



9
ADA Turnpiece
PL-KNADA
(Needs 1)



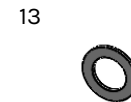
10
Wood Screw
#8 x 3/4
(Needs 4)



12
Snap Ring
PL-CCLIP11
(Needs 2)



11
Machine Screw
11A: PL-OVSCR36
11B: PL-OVSCR40
11C: PL-OVSCR46



13
Plastic Washer
PL-WAS12
(Needs 2)

