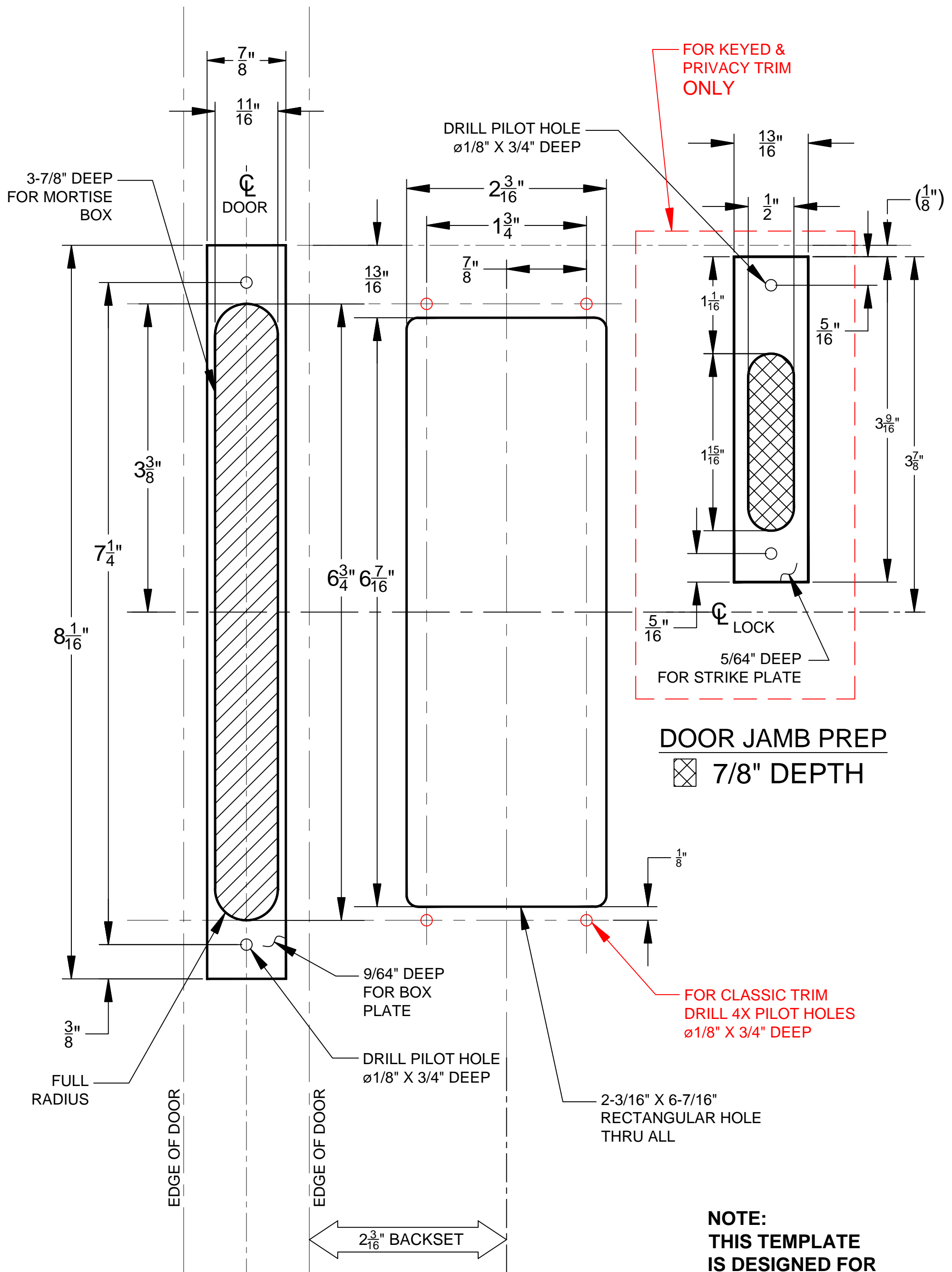


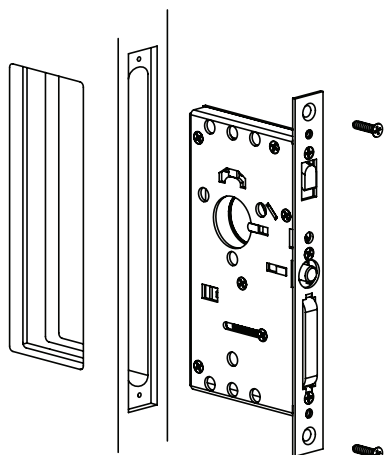
POCKET DOOR MORTISE HOLE PREPARATION



*** NOTE: 8-1/2" X 11" COPY OF THIS TEMPLATE NOT TO SCALE.**

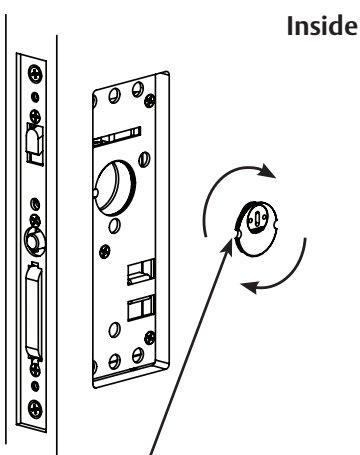
**NOTE:
THIS TEMPLATE
IS DESIGNED FOR
1-3/8" THICK DOOR.**

1 Install Lock Body



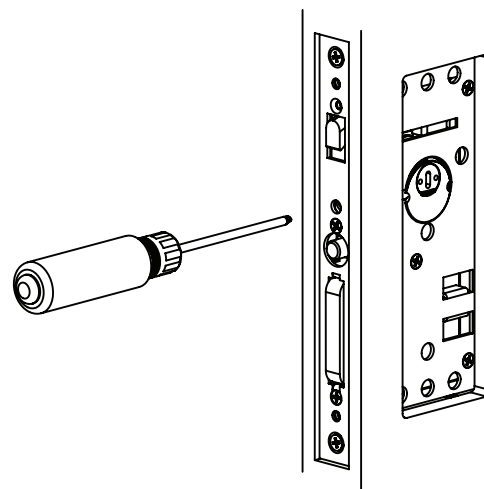
See template for door prep specifications

2 Install Drive Bar Cylinder



Note: Notch on cylinder must be in the 9 o' clock position when fully screwed into lock body.

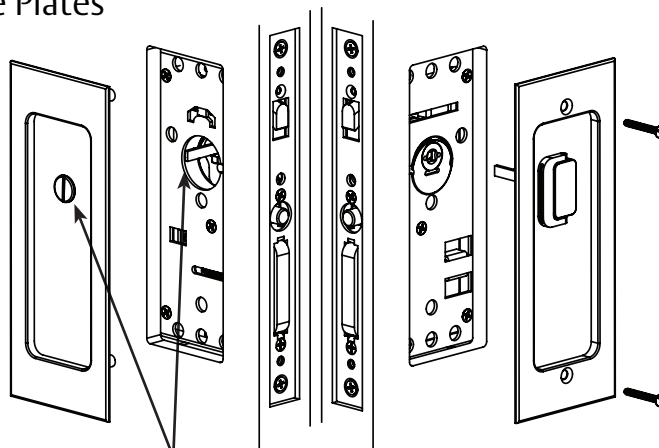
3 Tighten Drive Bar Cylinder



Tighten locking screw to engage notch on cylinder

4 Mount Inside/Outside Plates

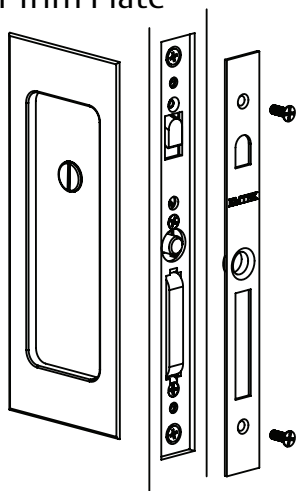
Outside



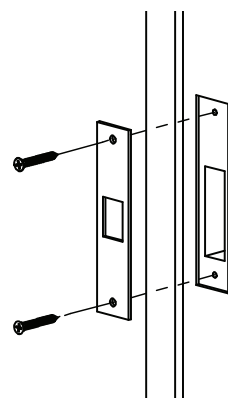
Inside

Align Passage/Privacy Button with Thumb-Turn spindle and secure trim plates to door.

5 Install Trim Plate



6 Install Door Jamb



Drill two 7/64" pilot holes

See template for door jamb prep specifications