

OMNIA

Pocket Door Hardware



SINCE
1964

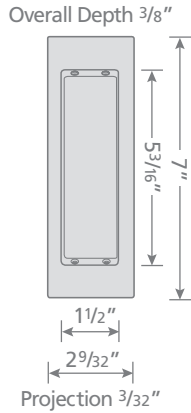
OMNIA Pocket Door Hardware

/0 after style # = flushcup only

/L after style # = lockbody with turnpiece and emergency release

/A after style # = lockbody with turnpiece and keyed entry

7035



Flushcup
7035/0



Lockbody
(comes with either
configuration)

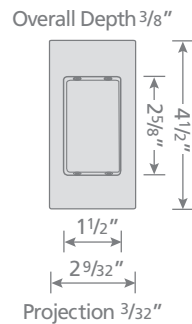


Interior Turnpiece &
Exterior Emergency Release
7035/L (with Lockbody)



OR
Interior Turnpiece &
Exterior Keyed Entry
7035/A (with Lockbody)

7036



Flushcup
7036/0

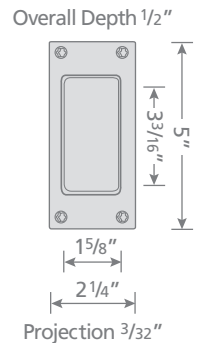


Interior Turnpiece & Exterior Emergency Release
7036/L (with Lockbody)



7012

7012 is only available in US32D for 1-3/4" thick doors. Trim features exposed screws.



Flushcup
7012/0



Interior Turnpiece & Exterior Emergency Release
7012/L (with Lockbody)



Finish Codes**



3
Polished
Brass,
Lacquered



3A
Polished
Brass,
Unlacquered



US4
Satin
Brass,
Lacquered



5
Antique
Brass,
Lacquered

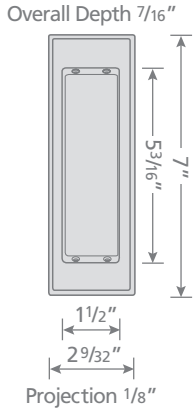


10B
Oil-Rubbed
Bronze,
Lacquered

/0 after style # = flushcup only
 /L after style # = lockbody with turnpiece and emergency release
 /A after style # = lockbody with turnpiece and keyed entry

Pocket Door Hardware OMNIA

7037



Flushcup
7037/0



Lockbody
(comes with either configuration)



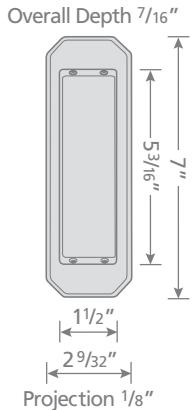
Interior Turnpiece &
Exterior Emergency Release
7037/L with Lockbody



OR

Interior Turnpiece &
Exterior Keyed Entry
7037/A with Lockbody

7039



Flushcup
7039/0



Lockbody
(comes with either configuration)



Interior Turnpiece &
Exterior Emergency Release
7039/L with Lockbody



OR

Interior Turnpiece &
Exterior Keyed Entry
7039/A with Lockbody



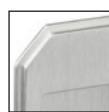
14
Polished
Nickel Plated,
Lacquered



15
Satin Nickel
Plated,
Lacquered



26
Polished
Chrome
Plated



26D
Satin
Chrome
Plated



32D
Stainless Steel
(Only available for 7012)

OMNIA Pocket Door Hardware

Product Data

Pocket Door Locksets

- **Backset:** 2 1/2"
- **For Door Thickness:** 1 3/4" thick as a standard, adjustable for 1 3/8" thick.
- **Case:** Stamped from heavy wrought steel with zinc dichromate finish for corrosion resistance.
- **Front:** Armored steel front adjustable for beveled doors, with an 8" x 1" solid brass faceplate. Finished to match trim.
- **Deadbolt:** 1/2" thick x 1 1/4" high x 1" throw, stainless steel, finished with US32D or PVD US4.
- **Pull:** 1/2" thick x 2" high x 1 1/4" throw, stainless steel, finished with US32D or PVD US4. Push button ejected with spring assistance.

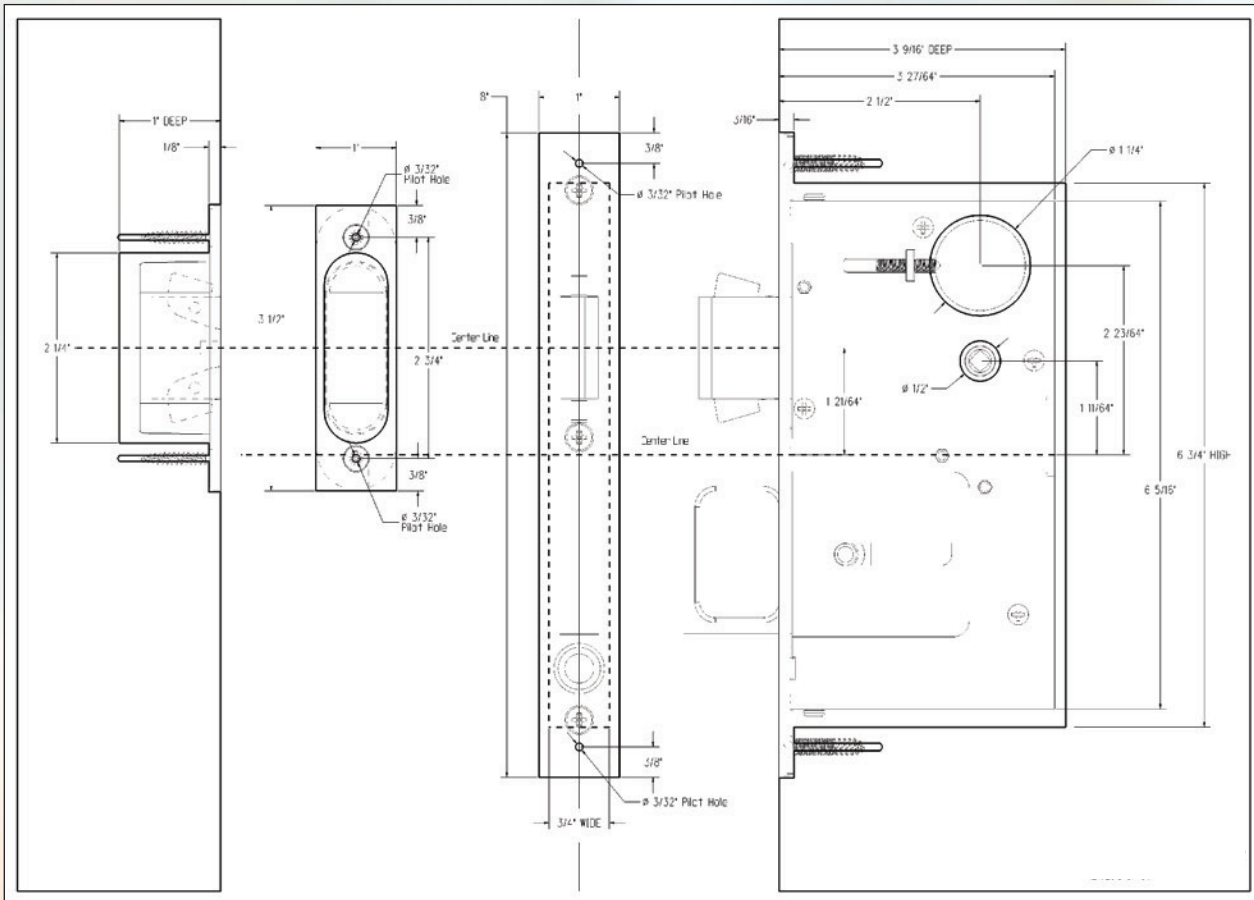
- **Strike:** Stainless steel for US32D or brass and plated finish to match trim. Black plastic dust box supplied as a standard.
- **Cylinder:** Solid brass from bar stock, Schlage "C" keyway with two OMNIA nickel silver keys.

ALL MOUNTING SCREWS ARE SUPPLIED WITH SETS.

Available Functions*

- **Privacy "L"** – Backplates (2) with emergency release outside x thumbturn inside, and includes lockbody
- **Entry "A"** – Backplates (2) with cylinder outside x thumbturn inside, and includes lockbody
- **Flushcup Only "O"** – Backplate (1) blank

Please Note:
Edge Pull 7653 is also available.



How to Order

EXAMPLE	Design	Function*	Finish**	Example product order number would be 7035/L.26
	7035	/ L	. 26	
	<p style="font-size: 0.8em;">*See Function Codes Above **See Finish Codes on Pages 2 & 3</p>			